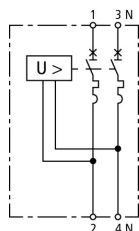


POP 2 255 C25 (900 760)

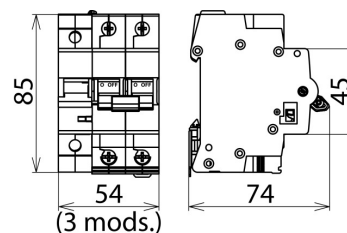
- Effective protection against mains-frequency surges
- Compact design allows easy retrofitting
- Compliance with EN 50550



Figure without obligation



Basic circuit diagram POP 2 255 C25



Dimension drawing POP 2 255 C25

POP+MCB

Type Part No.	POP 2 255 C25 900 760
Power supply system	single-phase TT / TN system
Number of poles	1P + N
Nominal a.c. voltage (U_N)	230 V
Nominal frequency (f_N)	50 Hz
Operating temperature range (T_U)	-25 °C ... +60 °C
Cross-sectional area (L, N) (min.)	2.5 mm ² solid / flexible
Cross-sectional area (L, N) (max.)	16 mm ² flexible / 25 mm ² stranded
Degree of protection protection	IP 20
Capacity	3 module(s), DIN 43880
Mounting	35 mm DIN rails acc. to EN 60715

POP

Type Part No.	POP 2 255 C25 900 760
Tested to	EN 50550
Max. non-tripping a.c. voltage	255 V
Max. tripping a.c. voltage	415 V
Tripping time at 275 V a.c.	8 s
Tripping time at 400 V a.c.	120 ms
Max. current at 275 V a.c.	0.4 A
Max. current at 400 V a.c.	0.6 A
Power consumption	0.7 VA
Trip indicator	red

MCB

Type Part No.	POP 2 255 C25 900 760
Tripping characteristic	C
Nominal alternating current (I_n)	25 A
Rated switching capacity (I_{cn}) acc. to EN 60898	6 kA
Weight	800 g
Customs tariff number	85363030
GTIN	4013364156135
PU	1 pc(s)

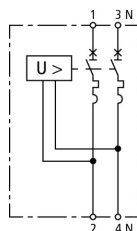
We reserve the right to introduce changes in performance, configuration and technology, dimensions, weights and materials in the course of technical progress. The figures are shown without obligation.

POP 2 255 C32 (900 761)

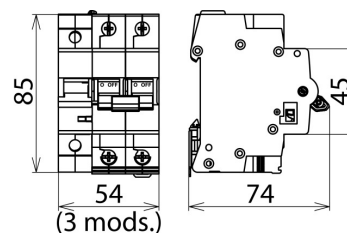
- Effective protection against mains-frequency surges
- Compact design allows easy retrofitting
- Compliance with EN 50550



Figure without obligation



Basic circuit diagram POP 2 255 C32



Dimension drawing POP 2 255 C32

POP+MCB

Type Part No.	POP 2 255 C32 900 761
Power supply system	single-phase TT / TN system
Number of poles	1P + N
Nominal a.c. voltage (U_N)	230 V
Nominal frequency (f_N)	50 Hz
Operating temperature range (T_U)	-25 °C ... +60 °C
Cross-sectional area (L, N) (min.)	2.5 mm ² solid / flexible
Cross-sectional area (L, N) (max.)	16 mm ² flexible / 25 mm ² stranded
Degree of protection protection	IP 20
Capacity	3 module(s), DIN 43880
Mounting	35 mm DIN rails acc. to EN 60715

POP

Type Part No.	POP 2 255 C32 900 761
Tested to	EN 50550
Max. non-tripping a.c. voltage	255 V
Max. tripping a.c. voltage	415 V
Tripping time at 275 V a.c.	8 s
Tripping time at 400 V a.c.	120 ms
Max. current at 275 V a.c.	0.4 A
Max. current at 400 V a.c.	0.6 A
Power consumption	0.7 VA
Trip indicator	red

MCB

Type Part No.	POP 2 255 C32 900 761
Tripping characteristic	C
Nominal alternating current (I_n)	32 A
Rated switching capacity (I_{cn}) acc. to EN 60898	6 kA
Weight	800 g
Customs tariff number	85363030
GTIN	4013364156142
PU	1 pc(s)

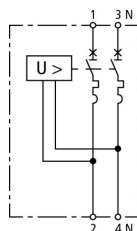
We reserve the right to introduce changes in performance, configuration and technology, dimensions, weights and materials in the course of technical progress. The figures are shown without obligation.

POP 2 255 C40 (900 762)

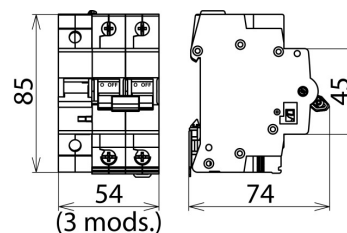
- Effective protection against mains-frequency surges
- Compact design allows easy retrofitting
- Compliance with EN 50550



Figure without obligation



Basic circuit diagram POP 2 255 C40



Dimension drawing POP 2 255 C40

POP+MCB

Type Part No.	POP 2 255 C40 900 762
Power supply system	single-phase TT / TN system
Number of poles	1P + N
Nominal a.c. voltage (U_N)	230 V
Nominal frequency (f_N)	50 Hz
Operating temperature range (T_U)	-25 °C ... +60 °C
Cross-sectional area (L, N) (min.)	2.5 mm ² solid / flexible
Cross-sectional area (L, N) (max.)	16 mm ² flexible / 25 mm ² stranded
Degree of protection protection	IP 20
Capacity	3 module(s), DIN 43880
Mounting	35 mm DIN rails acc. to EN 60715

POP

Type Part No.	POP 2 255 C40 900 762
Tested to	EN 50550
Max. non-tripping a.c. voltage	255 V
Max. tripping a.c. voltage	415 V
Tripping time at 275 V a.c.	8 s
Tripping time at 400 V a.c.	120 ms
Max. current at 275 V a.c.	0.4 A
Max. current at 400 V a.c.	0.6 A
Power consumption	0.7 VA
Trip indicator	red

MCB

Type Part No.	POP 2 255 C40 900 762
Tripping characteristic	C
Nominal alternating current (I_n)	40 A
Rated switching capacity (I_{cn}) acc. to EN 60898	6 kA
Weight	800 g
Customs tariff number	85363030
GTIN	4013364156159
PU	1 pc(s)

We reserve the right to introduce changes in performance, configuration and technology, dimensions, weights and materials in the course of technical progress. The figures are shown without obligation.

POP 4 255 C25 (900 765)

- Effective protection against mains-frequency surges
- Compact design allows easy retrofitting
- Compliance with EN 5055

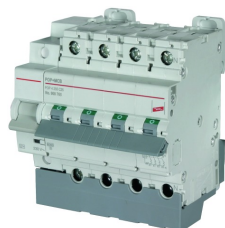
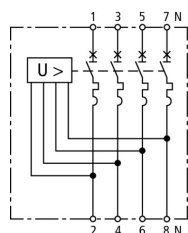
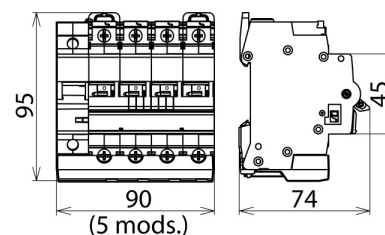


Figure without obligation



Basic circuit diagram POP 4 255 C25



Dimension drawing POP 4 255 C25

POP+MCB

Type Part No.	POP 4 255 C25 900 765
Power supply system	three-phase TT / TN system
Number of poles	3P + N
Nominal a.c. voltage (U_N)	230 / 400 V
Nominal frequency (f_N)	50 Hz
Operating temperature range (T_U)	-25 °C ... +60 °C
Cross-sectional area (L1, L2, L3, N) (min.)	2.5 mm ² solid / flexible
Cross-sectional area (L1, L2, L3, N) (max.)	16 mm ² flexible / 25 mm ² stranded
Degree of protection protection	IP 20
Capacity	5 module(s), DIN 43880
Mounting	35 mm DIN rails acc. to EN 60715

POP

Type Part No.	POP 4 255 C25 900 765
Tested to	EN 50550
Max. non-tripping a.c. voltage	255 V
Max. tripping a.c. voltage	415 V
Tripping time at 275 V a.c.	8 s
Tripping time at 400 V a.c.	120 ms
Max. current at 275 V a.c.	0.4 A
Max. current at 400 V a.c.	0.6 A
Power consumption	0.7 VA
Trip indicator	red

MCB

Type Part No.	POP 4 255 C25 900 765
Tripping characteristic	C
Nominal alternating current (I_n)	25 A
Rated switching capacity (I_{cn}) acc. to EN 60898	6 kA
Weight	800 g
Customs tariff number	85363030
GTIN	4013364156166
PU	1 pc(s)

We reserve the right to introduce changes in performance, configuration and technology, dimensions, weights and materials in the course of technical progress. The figures are shown without obligation.

POP 4 255 C32 (900 766)

- Effective protection against mains-frequency surges
- Compact design allows easy retrofitting
- Compliance with EN 5055

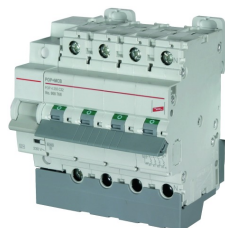
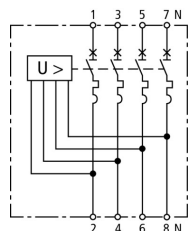
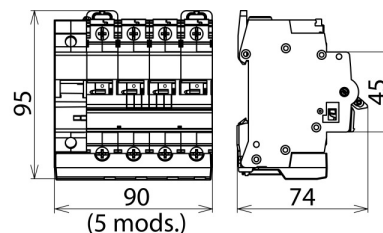


Figure without obligation



Basic circuit diagram POP 4 255 C32



Dimension drawing POP 4 255 C32

POP+MCB

Type Part No.	POP 4 255 C32 900 766
Power supply system	three-phase TT / TN system
Number of poles	3P + N
Nominal a.c. voltage (U_N)	230 / 400 V
Nominal frequency (f_N)	50 Hz
Operating temperature range (T_U)	-25 °C ... +60 °C
Cross-sectional area (L1, L2, L3, N) (min.)	2.5 mm ² solid / flexible
Cross-sectional area (L1, L2, L3, N) (max.)	16 mm ² flexible / 25 mm ² stranded
Degree of protection protection	IP 20
Capacity	5 module(s), DIN 43880
Mounting	35 mm DIN rails acc. to EN 60715

POP

Type Part No.	POP 4 255 C32 900 766
Tested to	EN 50550
Max. non-tripping a.c. voltage	255 V
Max. tripping a.c. voltage	415 V
Tripping time at 275 V a.c.	8 s
Tripping time at 400 V a.c.	120 ms
Max. current at 275 V a.c.	0.4 A
Max. current at 400 V a.c.	0.6 A
Power consumption	0.7 VA
Trip indicator	red

MCB

Type Part No.	POP 4 255 C32 900 766
Tripping characteristic	C
Nominal alternating current (I_n)	32 A
Rated switching capacity (I_{cn}) acc. to EN 60898	6 kA
Weight	800 g
Customs tariff number	85363030
GTIN	4013364156173
PU	1 pc(s)

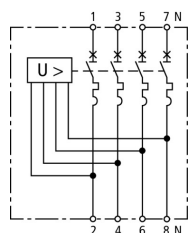
We reserve the right to introduce changes in performance, configuration and technology, dimensions, weights and materials in the course of technical progress. The figures are shown without obligation.

POP 4 255 C40 (900 767)

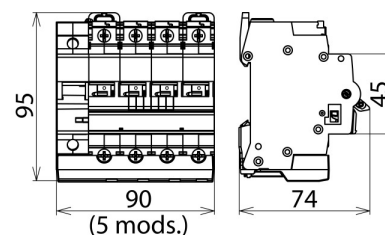
- Effective protection against mains-frequency surges
- Compact design allows easy retrofitting
- Compliance with EN 5055



Figure without obligation



Basic circuit diagram POP 4 255 C40



Dimension drawing POP 4 255 C40

POP+MCB

Type Part No.	POP 4 255 C40 900 767
Power supply system	three-phase TT / TN system
Number of poles	3P + N
Nominal a.c. voltage (U_N)	230 / 400 V
Nominal frequency (f_N)	50 Hz
Operating temperature range (T_U)	-25 °C ... +60 °C
Cross-sectional area (L1, L2, L3, N) (min.)	2.5 mm ² solid / flexible
Cross-sectional area (L1, L2, L3, N) (max.)	16 mm ² flexible / 25 mm ² stranded
Degree of protection protection	IP 20
Capacity	5 module(s), DIN 43880
Mounting	35 mm DIN rails acc. to EN 60715

POP

Type Part No.	POP 4 255 C40 900 767
Tested to	EN 50550
Max. non-tripping a.c. voltage	255 V
Max. tripping a.c. voltage	415 V
Tripping time at 275 V a.c.	8 s
Tripping time at 400 V a.c.	120 ms
Max. current at 275 V a.c.	0.4 A
Max. current at 400 V a.c.	0.6 A
Power consumption	0.7 VA
Trip indicator	red

MCB

Type Part No.	POP 4 255 C40 900 767
Tripping characteristic	C
Nominal alternating current (I_n)	40 A
Rated switching capacity (I_{cn}) acc. to EN 60898	6 kA
Weight	800 g
Customs tariff number	85363030
GTIN	4013364156180
PU	1 pc(s)

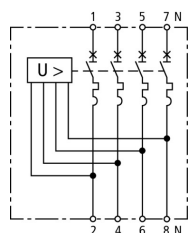
We reserve the right to introduce changes in performance, configuration and technology, dimensions, weights and materials in the course of technical progress. The figures are shown without obligation.

POP 4 255 C63 (900 768)

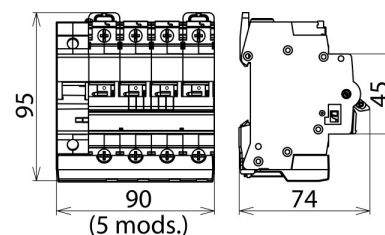
- Effective protection against mains-frequency surges
- Compact design allows easy retrofitting
- Compliance with EN 5055



Figure without obligation



Basic circuit diagram POP 4 255 C63



Dimension drawing POP 4 255 C63

POP+MCB

Type Part No.	POP 4 255 C63 900 768
Power supply system	three-phase TT / TN system
Number of poles	3P + N
Nominal a.c. voltage (U_N)	230 / 400 V
Nominal frequency (f_N)	50 Hz
Operating temperature range (T_U)	-25 °C ... +60 °C
Cross-sectional area (L1, L2, L3, N) (min.)	2.5 mm ² solid / flexible
Cross-sectional area (L1, L2, L3, N) (max.)	16 mm ² flexible / 25 mm ² stranded
Degree of protection protection	IP 20
Capacity	5 module(s), DIN 43880
Mounting	35 mm DIN rails acc. to EN 60715

POP

Type Part No.	POP 4 255 C63 900 768
Tested to	EN 50550
Max. non-tripping a.c. voltage	255 V
Max. tripping a.c. voltage	415 V
Tripping time at 275 V a.c.	8 s
Tripping time at 400 V a.c.	120 ms
Max. current at 275 V a.c.	0.4 A
Max. current at 400 V a.c.	0.6 A
Power consumption	0.7 VA
Trip indicator	red

MCB

Type Part No.	POP 4 255 C63 900 768
Tripping characteristic	C
Nominal alternating current (I_n)	63 A
Rated switching capacity (I_{cn}) acc. to EN 60898	6 kA
Weight	800 g
Customs tariff number	85363030
GTIN	4013364156197
PU	1 pc(s)

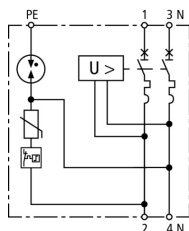
We reserve the right to introduce changes in performance, configuration and technology, dimensions, weights and materials in the course of technical progress. The figures are shown without obligation.

SPD+POP 2 255 C25 (900 780)

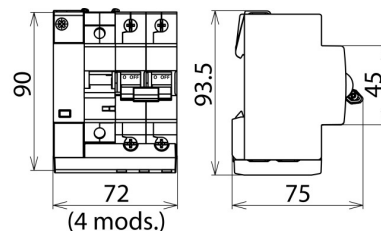
- Complete protection against transient and mains-frequency surges
- Compact design allows easy retrofitting
- Meets the requirements of EN 61643-11 (SPD) and EN 50550 (POP)



Figure without obligation



Basic circuit diagram SPD+POP 2 255 C25



Dimension drawing SPD+POP 2 255 C25

SPD+POP+MCB

Type	SPD+POP 2 255 C25
Part No.	900 780
Power supply system	single-phase TT / TN system
Number of poles	1P + N
Nominal a.c. voltage (U_N)	230 V
Nominal frequency (f_N)	50 Hz
Operating temperature range (T_U)	-25 °C ... +60 °C
Cross-sectional area (L, N) (min.)	2.5 mm ² solid / flexible
Cross-sectional area (L, N) (max.)	16 mm ² flexible / 25 mm ² stranded
Cross-sectional area (PE) (min.)	0.75 mm ² solid / flexible
Cross-sectional area (PE) (max.)	6 mm ² flexible / 10 mm ² solid
Degree of protection protection	IP 20
Capacity	4 module(s), DIN 43880
Mounting	35 mm DIN rails acc. to EN 60715

SPD

Type	SPD+POP 2 255 C25
Part No.	900 780
SPD according to EN 61643-11 / ... IEC 61643-1/-11	type 2
SPD according to IEC 61643-11	class II
Max. continuous operating a.c. voltage [L-N] (U_C)	275 V
Max. continuous operating a.c. voltage [N-PE] (U_C)	255 V
Follow current extinguishing capability [N-PE] (I_n)	100 A
Nominal discharge current (8/20 μ s) [L-N] (I_n)	5 kA
Nominal discharge current (8/20 μ s) [N-PE] (I_n)	20 kA
Max. discharge current (8/20 μ s) [L-N] (I_{max})	15 kA
Max. discharge current (8/20 μ s) [N-PE] (I_{max})	40 kA
Voltage protection level (U_P)	≤ 1.5 kV
Protective conductor current (I_{PE})	≤ 5 μ A
Response time [L-N] (t_A)	≤ 25 ns
Response time [N-PE] (t_A)	≤ 100 ns
Max. mains-side overcurrent protection	MCB C 63 A
Short-circuit withstand capability (I_{SCCR})	6 kA
Temporary overvoltage (TOV) L-N (U_T)	335 V / 5 s
Temporary overvoltage (TOV) [N-PE] (U_T)	1200 V / 200 ms
TOV characteristic	withstand
Operating state / fault indication	green / red
Number of ports	1
Enclosure material	thermoplastic, grey, UL 94 V-0
Place of installation	indoor installation

POP

Type	SPD+POP 2 255 C25
Part No.	900 780
Tested to	EN 50550
Max. non-tripping a.c. voltage	255 V
Max. tripping a.c. voltage	415 V
Tripping time at 275 V a.c.	8 s
Tripping time at 400 V a.c.	120 ms
Max. current at 275 V a.c.	0.4 A
Max. current at 400 V a.c.	0.6 A
Power consumption	0.7 VA
Trip indicator	red

MCB

Type	SPD+POP 2 255 C25
Part No.	900 780
Tripping characteristic	C
Nominal alternating current (I_n)	25 A
Rated switching capacity (I_{cn}) acc. to EN 60898	6 kA
Weight	800 g
Customs tariff number	85363030
GTIN	4013364156203
PU	1 pc(s)

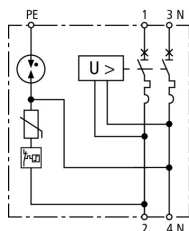
We reserve the right to introduce changes in performance, configuration and technology, dimensions, weights and materials in the course of technical progress. The figures are shown without obligation.

SPD+POP 2 255 C32 (900 781)

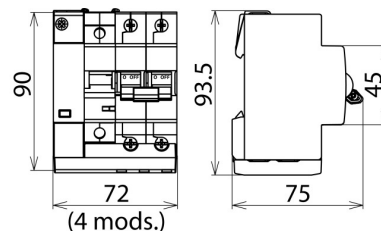
- Complete protection against transient and mains-frequency surges
- Compact design allows easy retrofitting
- Meets the requirements of EN 61643-11 (SPD) and EN 50550 (POP)



Figure without obligation



Basic circuit diagram SPD+POP 2 255 C32



Dimension drawing SPD+POP 2 255 C32

SPD+POP+MCB

Type	SPD+POP 2 255 C32
Part No.	900 781
Power supply system	single-phase TT / TN system
Number of poles	1P + N
Nominal a.c. voltage (U_N)	230 V
Nominal frequency (f_N)	50 Hz
Operating temperature range (T_U)	-25 °C ... +60 °C
Cross-sectional area (L, N) (min.)	2.5 mm ² solid / flexible
Cross-sectional area (L, N) (max.)	16 mm ² flexible / 25 mm ² stranded
Cross-sectional area (PE) (min.)	0.75 mm ² solid / flexible
Cross-sectional area (PE) (max.)	6 mm ² flexible / 10 mm ² solid
Degree of protection protection	IP 20
Capacity	4 module(s), DIN 43880
Mounting	35 mm DIN rails acc. to EN 60715

SPD

Type	SPD+POP 2 255 C32
Part No.	900 781
SPD according to EN 61643-11 / ... IEC 61643-1/-11	type 2
Max. continuous operating a.c. voltage [L-N] (U_C)	275 V
Max. continuous operating a.c. voltage [N-PE] (U_C)	255 V
Follow current extinguishing capability [N-PE] (I_b)	100 A
Nominal discharge current (8/20 μ s) [L-N] (I_n)	5 kA
Nominal discharge current (8/20 μ s) [N-PE] (I_n)	20 kA
Max. discharge current (8/20 μ s) [L-N] (I_{max})	15 kA
Max. discharge current (8/20 μ s) [N-PE] (I_{max})	40 kA
Voltage protection level (U_P)	≤ 1.5 kV
Protective conductor current (I_{PE})	≤ 5 μ A
Response time [L-N] (t_A)	≤ 25 ns
Response time [N-PE] (t_A)	≤ 100 ns
Max. mains-side overcurrent protection	MCB C 63 A
Short-circuit withstand capability (I_{SCCR})	6 kA
Temporary overvoltage (TOV) L-N (U_T)	335 V / 5 s
Temporary overvoltage (TOV) [N-PE] (U_T)	1200 V / 200 ms
TOV characteristic	withstand
Operating state / fault indication	green / red
Number of ports	1
Enclosure material	thermoplastic, grey, UL 94 V-0
Place of installation	indoor installation

POP

Type	SPD+POP 2 255 C32
Part No.	900 781
Tested to	EN 50550
Max. non-tripping a.c. voltage	255 V
Max. tripping a.c. voltage	415 V
Tripping time at 275 V a.c.	8 s
Tripping time at 400 V a.c.	120 ms
Max. current at 275 V a.c.	0.4 A
Max. current at 400 V a.c.	0.6 A
Power consumption	0.7 VA
Trip indicator	red

MCB

Type	SPD+POP 2 255 C32
Part No.	900 781
Tripping characteristic	C
Nominal alternating current (I_n)	32 A
Rated switching capacity (I_{cn}) acc. to EN 60898	6 kA
Weight	800 g
Customs tariff number	85363030
GTIN	4013364156210
PU	1 pc(s)

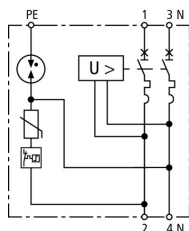
We reserve the right to introduce changes in performance, configuration and technology, dimensions, weights and materials in the course of technical progress. The figures are shown without obligation.

SPD+POP 2 255 C40 (900 782)

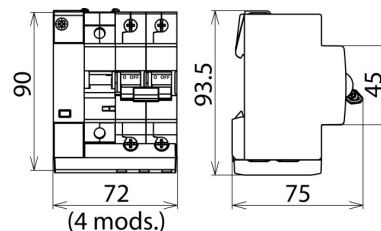
- Complete protection against transient and mains-frequency surges
- Compact design allows easy retrofitting
- Meets the requirements of EN 61643-11 (SPD) and EN 50550 (POP)



Figure without obligation



Basic circuit diagram SPD+POP 2 255 C40



Dimension drawing SPD+POP 2 255 C40

SPD+POP+MCB

Type	SPD+POP 2 255 C40
Part No.	900 782
Power supply system	single-phase TT / TN system
Number of poles	1P + N
Nominal a.c. voltage (U_N)	230 V
Nominal frequency (f_N)	50 Hz
Operating temperature range (T_U)	-25 °C ... +60 °C
Cross-sectional area (L, N) (min.)	2.5 mm ² solid / flexible
Cross-sectional area (L, N) (max.)	16 mm ² flexible / 25 mm ² stranded
Cross-sectional area (PE) (min.)	0.75 mm ² solid / flexible
Cross-sectional area (PE) (max.)	6 mm ² flexible / 10 mm ² solid
Degree of protection protection	IP 20
Capacity	4 module(s), DIN 43880
Mounting	35 mm DIN rails acc. to EN 60715

SPD

Type	SPD+POP 2 255 C40
Part No.	900 782
SPD according to EN 61643-11 / ... IEC 61643-1/-11	type 2
Max. continuous operating a.c. voltage [L-N] (U_C)	275 V
Max. continuous operating a.c. voltage [N-PE] (U_C)	255 V
Follow current extinguishing capability [N-PE] (I_b)	100 A
Nominal discharge current (8/20 μ s) [L-N] (I_n)	5 kA
Nominal discharge current (8/20 μ s) [N-PE] (I_n)	20 kA
Max. discharge current (8/20 μ s) [L-N] (I_{max})	15 kA
Max. discharge current (8/20 μ s) [N-PE] (I_{max})	40 kA
Voltage protection level (U_P)	≤ 1.5 kV
Protective conductor current (I_{PE})	≤ 5 μ A
Response time [L-N] (t_A)	≤ 25 ns
Response time [N-PE] (t_A)	≤ 100 ns
Max. mains-side overcurrent protection	MCB C 63 A
Short-circuit withstand capability (I_{SCCR})	6 kA
Temporary overvoltage (TOV) L-N (U_T)	335 V / 5 s
Temporary overvoltage (TOV) [N-PE] (U_T)	1200 V / 200 ms
TOV characteristic	withstand
Operating state / fault indication	green / red
Number of ports	1
Enclosure material	thermoplastic, grey, UL 94 V-0
Place of installation	indoor installation

POP

Type	SPD+POP 2 255 C40
Part No.	900 782
Tested to	EN 50550
Max. non-tripping a.c. voltage	255 V
Max. tripping a.c. voltage	415 V
Tripping time at 275 V a.c.	8 s
Tripping time at 400 V a.c.	120 ms
Max. current at 275 V a.c.	0.4 A
Max. current at 400 V a.c.	0.6 A
Power consumption	0.7 VA
Trip indicator	red

MCB

Type	SPD+POP 2 255 C40
Part No.	900 782
Tripping characteristic	C
Nominal alternating current (I_n)	40 A
Rated switching capacity (I_{cn}) acc. to EN 60898	6 kA
Weight	800 g
Customs tariff number	85363030
GTIN	4013364156227
PU	1 pc(s)

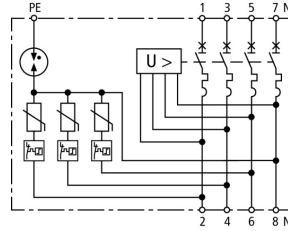
We reserve the right to introduce changes in performance, configuration and technology, dimensions, weights and materials in the course of technical progress. The figures are shown without obligation.

SPD+POP 4 255 C25 (900 785)

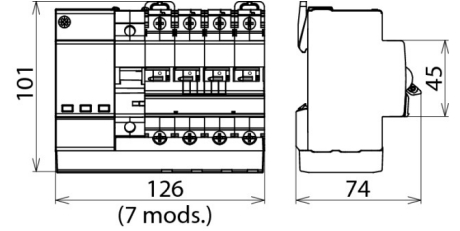
- Complete protection against transient and mains-frequency surges
- Compact design allows easy retrofitting
- Meets the requirements of EN 61643-11 (SPD) and EN 50550 (POP)



Figure without obligation



Basic circuit diagram SPD+POP 4 255 C25



Dimension drawing SPD+POP 4 255 C25

SPD+POP+MCB

Type	SPD+POP 4 255 C25
Part No.	900 785
Power supply system	three-phase TT / TN system
Number of poles	3P + N
Nominal a.c. voltage (U _N)	230 / 400 V
Nominal frequency (f _N)	50 Hz
Operating temperature range (T _U)	-25 °C ... +60 °C
Cross-sectional area (L1, L2, L3, N) (min.)	2.5 mm ² solid / flexible
Cross-sectional area (L1, L2, L3, N) (max.)	16 mm ² flexible / 25 mm ² stranded
Cross-sectional area (PE) (min.)	0.75 mm ² solid / flexible
Cross-sectional area (PE) (max.)	6 mm ² flexible / 10 mm ² solid
Degree of protection protection	IP 20
Capacity	7 module(s), DIN 43880
Mounting	35 mm DIN rails acc. to EN 60715

SPD

Type	SPD+POP 4 255 C25
Part No.	900 785
SPD according to EN 61643-11 / ... IEC 61643-1/-11	type 2
Max. continuous operating a.c. voltage [L-N] (U _C)	275 V
Max. continuous operating a.c. voltage [N-PE] (U _C)	255 V
Follow current extinguishing capability [N-PE] (I _f)	100 A
Nominal discharge current (8/20 μs) [L-N] (I _n)	5 kA
Nominal discharge current (8/20 μs) [N-PE] (I _n)	20 kA
Max. discharge current (8/20 μs) [L-N] (I _{max})	15 kA
Max. discharge current (8/20 μs) [N-PE] (I _{max})	40 kA
Voltage protection level (U _P)	≤ 1.5 kV
Protective conductor current (I _{PE})	≤ 5 μA
Response time [L-N] (t _A)	≤ 25 ns
Response time [N-PE] (t _A)	≤ 100 ns
Max. mains-side overcurrent protection	MCB C 63 A
Short-circuit withstand capability (I _{SCCR})	6 kA
Temporary overvoltage (TOV) L-N (U _T)	335 V / 5 s
Temporary overvoltage (TOV) [N-PE] (U _T)	1200 V / 200 ms
TOV characteristic	withstand
Operating state / fault indication	green / red
Number of ports	1
Enclosure material	thermoplastic, grey, UL 94 V-0
Place of installation	indoor installation

POP

Type	SPD+POP 4 255 C25
Part No.	900 785
Tested to	EN 50550
Max. non-tripping a.c. voltage	255 V
Max. tripping a.c. voltage	415 V
Tripping time at 275 V a.c.	8 s
Tripping time at 400 V a.c.	120 ms
Max. current at 275 V a.c.	0.4 A
Max. current at 400 V a.c.	0.6 A
Power consumption	0.7 VA
Trip indicator	red

MCB

Type	SPD+POP 4 255 C25
Part No.	900 785
Tripping characteristic	C
Nominal alternating current (I_n)	25 A
Rated switching capacity (I_{cn}) acc. to EN 60898	6 kA
Weight	800 g
Customs tariff number	85363030
GTIN	4013364156234
PU	1 pc(s)

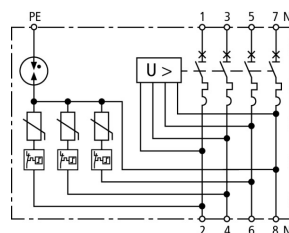
We reserve the right to introduce changes in performance, configuration and technology, dimensions, weights and materials in the course of technical progress. The figures are shown without obligation.

SPD+POP 4 255 C32 (900 786)

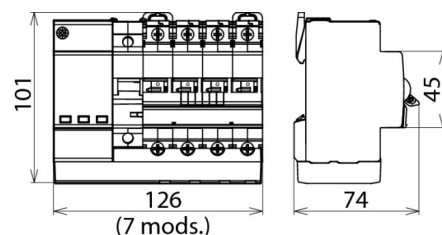
- Complete protection against transient and mains-frequency surges
- Compact design allows easy retrofitting
- Meets the requirements of EN 61643-11 (SPD) and EN 50550 (POP)



Figure without obligation



Basic circuit diagram SPD+POP 4 255 C32



Dimension drawing SPD+POP 4 255 C32

SPD+POP+MCB

Type	SPD+POP 4 255 C32
Part No.	900 786
Power supply system	three-phase TT / TN system
Number of poles	3P + N
Nominal a.c. voltage (U_N)	230 / 400 V
Nominal frequency (f_N)	50 Hz
Operating temperature range (T_U)	-25 °C ... +60 °C
Cross-sectional area (L1, L2, L3, N) (min.)	2.5 mm ² solid / flexible
Cross-sectional area (L1, L2, L3, N) (max.)	16 mm ² flexible / 25 mm ² stranded
Cross-sectional area (PE) (min.)	0.75 mm ² solid / flexible
Cross-sectional area (PE) (max.)	6 mm ² flexible / 10 mm ² solid
Degree of protection protection	IP 20
Capacity	7 module(s), DIN 43880
Mounting	35 mm DIN rails acc. to EN 60715

SPD

Type	SPD+POP 4 255 C32
Part No.	900 786
SPD according to EN 61643-11 / ... IEC 61643-1/-11	type 2
Max. continuous operating a.c. voltage [L-N] (U_C)	275 V
Max. continuous operating a.c. voltage [N-PE] (U_C)	255 V
Follow current extinguishing capability [N-PE] (I_b)	100 A
Nominal discharge current (8/20 μ s) [L-N] (I_n)	5 kA
Nominal discharge current (8/20 μ s) [N-PE] (I_n)	20 kA
Max. discharge current (8/20 μ s) [L-N] (I_{max})	15 kA
Max. discharge current (8/20 μ s) [N-PE] (I_{max})	40 kA
Voltage protection level (U_P)	≤ 1.5 kV
Protective conductor current (I_{PE})	≤ 5 μ A
Response time [L-N] (t_A)	≤ 25 ns
Response time [N-PE] (t_A)	≤ 100 ns
Max. mains-side overcurrent protection	MCB C 63 A
Short-circuit withstand capability (I_{SCCR})	6 kA
Temporary overvoltage (TOV) L-N (U_T)	335 V / 5 s
Temporary overvoltage (TOV) [N-PE] (U_T)	1200 V / 200 ms
TOV characteristic	withstand
Operating state / fault indication	green / red
Number of ports	1
Enclosure material	thermoplastic, grey, UL 94 V-0
Place of installation	indoor installation

POP

Type	SPD+POP 4 255 C32
Part No.	900 786
Tested to	EN 50550
Max. non-tripping a.c. voltage	255 V
Max. tripping a.c. voltage	415 V
Tripping time at 275 V a.c.	8 s
Tripping time at 400 V a.c.	120 ms
Max. current at 275 V a.c.	0.4 A
Max. current at 400 V a.c.	0.6 A
Power consumption	0.7 VA
Trip indicator	red

MCB

Type	SPD+POP 4 255 C32
Part No.	900 786
Tripping characteristic	C
Nominal alternating current (I_n)	32 A
Rated switching capacity (I_{cn}) acc. to EN 60898	6 kA
Weight	800 g
Customs tariff number	85363030
GTIN	4013364156241
PU	1 pc(s)

We reserve the right to introduce changes in performance, configuration and technology, dimensions, weights and materials in the course of technical progress. The figures are shown without obligation.

SPD+POP 4 255 C40 (900 787)

- Complete protection against transient and mains-frequency surges
- Compact design allows easy retrofitting
- Meets the requirements of EN 61643-11 (SPD) and EN 50550 (POP)

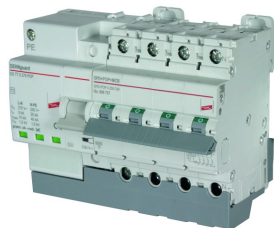
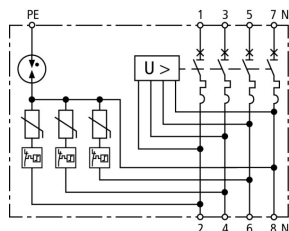
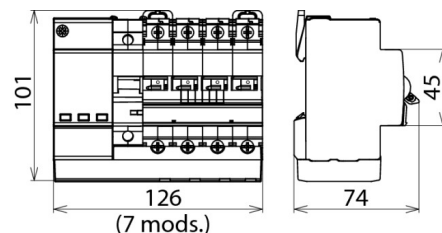


Figure without obligation



Basic circuit diagram SPD+POP 4 255 C40



Dimension drawing SPD+POP 4 255 C40

SPD+POP+MCB

Type	SPD+POP 4 255 C40
Part No.	900 787
Power supply system	three-phase TT / TN system
Number of poles	3P + N
Nominal a.c. voltage (U_N)	230 / 400 V
Nominal frequency (f_N)	50 Hz
Operating temperature range (T_U)	-25 °C ... +60 °C
Cross-sectional area (L1, L2, L3, N) (min.)	2.5 mm ² solid / flexible
Cross-sectional area (L1, L2, L3, N) (max.)	16 mm ² flexible / 25 mm ² stranded
Cross-sectional area (PE) (min.)	0.75 mm ² solid / flexible
Cross-sectional area (PE) (max.)	6 mm ² flexible / 10 mm ² solid
Degree of protection protection	IP 20
Capacity	7 module(s), DIN 43880
Mounting	35 mm DIN rails acc. to EN 60715

SPD

Type	SPD+POP 4 255 C40
Part No.	900 787
SPD according to EN 61643-11 / ... IEC 61643-1/-11	type 2
Max. continuous operating a.c. voltage [L-N] (U_C)	275 V
Max. continuous operating a.c. voltage [N-PE] (U_C)	255 V
Follow current extinguishing capability [N-PE] (I_b)	100 A
Nominal discharge current (8/20 μ s) [L-N] (I_n)	5 kA
Nominal discharge current (8/20 μ s) [N-PE] (I_n)	20 kA
Max. discharge current (8/20 μ s) [L-N] (I_{max})	15 kA
Max. discharge current (8/20 μ s) [N-PE] (I_{max})	40 kA
Voltage protection level (U_P)	≤ 1.5 kV
Protective conductor current (I_{PE})	≤ 5 μ A
Response time [L-N] (t_A)	≤ 25 ns
Response time [N-PE] (t_A)	≤ 100 ns
Max. mains-side overcurrent protection	MCB C 63 A
Short-circuit withstand capability (I_{SCCR})	6 kA
Temporary overvoltage (TOV) L-N (U_T)	335 V / 5 s
Temporary overvoltage (TOV) [N-PE] (U_T)	1200 V / 200 ms
TOV characteristic	withstand
Operating state / fault indication	green / red
Number of ports	1
Enclosure material	thermoplastic, grey, UL 94 V-0
Place of installation	indoor installation

POP

Type	SPD+POP 4 255 C40
Part No.	900 787
Tested to	EN 50550
Max. non-tripping a.c. voltage	255 V
Max. tripping a.c. voltage	415 V
Tripping time at 275 V a.c.	8 s
Tripping time at 400 V a.c.	120 ms
Max. current at 275 V a.c.	0.4 A
Max. current at 400 V a.c.	0.6 A
Power consumption	0.7 VA
Trip indicator	red

MCB

Type	SPD+POP 4 255 C40
Part No.	900 787
Tripping characteristic	C
Nominal alternating current (I_n)	40 A
Rated switching capacity (I_{cn}) acc. to EN 60898	6 kA
Weight	800 g
Customs tariff number	85363030
GTIN	4013364156258
PU	1 pc(s)

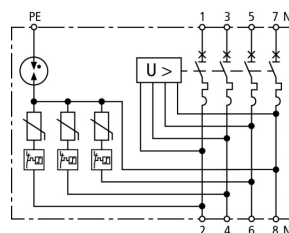
We reserve the right to introduce changes in performance, configuration and technology, dimensions, weights and materials in the course of technical progress. The figures are shown without obligation.

SPD+POP 4 255 C63 (900 788)

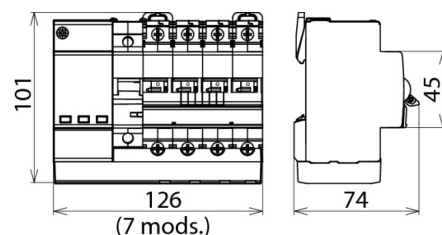
- Complete protection against transient and mains-frequency surges
- Compact design allows easy retrofitting
- Meets the requirements of EN 61643-11 (SPD) and EN 50550 (POP)



Figure without obligation



Basic circuit diagram SPD+POP 4 255 C63



Dimension drawing SPD+POP 4 255 C63

SPD+POP+MCB

Type	SPD+POP 4 255 C63
Part No.	900 788
Power supply system	three-phase TT / TN system
Number of poles	3P + N
Nominal a.c. voltage (U_N)	230 / 400 V
Nominal frequency (f_N)	50 Hz
Operating temperature range (T_U)	-25 °C ... +60 °C
Cross-sectional area (L1, L2, L3, N) (min.)	2.5 mm ² solid / flexible
Cross-sectional area (L1, L2, L3, N) (max.)	16 mm ² flexible / 25 mm ² stranded
Cross-sectional area (PE) (min.)	0.75 mm ² solid / flexible
Cross-sectional area (PE) (max.)	6 mm ² flexible / 10 mm ² solid
Degree of protection protection	IP 20
Capacity	7 module(s), DIN 43880
Mounting	35 mm DIN rails acc. to EN 60715

SPD

Type	SPD+POP 4 255 C63
Part No.	900 788
SPD according to EN 61643-11 / ... IEC 61643-1/-11	type 2
Max. continuous operating a.c. voltage [L-N] (U_C)	275 V
Max. continuous operating a.c. voltage [N-PE] (U_C)	255 V
Follow current extinguishing capability [N-PE] (I_b)	100 A
Nominal discharge current (8/20 μ s) [L-N] (I_n)	5 kA
Nominal discharge current (8/20 μ s) [N-PE] (I_n)	20 kA
Max. discharge current (8/20 μ s) [L-N] (I_{max})	15 kA
Max. discharge current (8/20 μ s) [N-PE] (I_{max})	40 kA
Voltage protection level (U_P)	≤ 1.5 kV
Protective conductor current (I_{PE})	≤ 5 μ A
Response time [L-N] (t_A)	≤ 25 ns
Response time [N-PE] (t_A)	≤ 100 ns
Max. mains-side overcurrent protection	MCB C 63 A
Short-circuit withstand capability (I_{SCCR})	6 kA
Temporary overvoltage (TOV) L-N (U_T)	335 V / 5 s
Temporary overvoltage (TOV) [N-PE] (U_T)	1200 V / 200 ms
TOV characteristic	withstand
Operating state / fault indication	green / red
Number of ports	1
Enclosure material	thermoplastic, grey, UL 94 V-0
Place of installation	indoor installation

POP

Type	SPD+POP 4 255 C63
Part No.	900 788
Tested to	EN 50550
Max. non-tripping a.c. voltage	255 V
Max. tripping a.c. voltage	415 V
Tripping time at 275 V a.c.	8 s
Tripping time at 400 V a.c.	120 ms
Max. current at 275 V a.c.	0.4 A
Max. current at 400 V a.c.	0.6 A
Power consumption	0.7 VA
Trip indicator	red

MCB

Type	SPD+POP 4 255 C63
Part No.	900 788
Tripping characteristic	C
Nominal alternating current (I_n)	63 A
Rated switching capacity (I_{cn}) acc. to EN 60898	6 kA
Weight	800 g
Customs tariff number	85363030
GTIN	4013364156265
PU	1 pc(s)

We reserve the right to introduce changes in performance, configuration and technology, dimensions, weights and materials in the course of technical progress. The figures are shown without obligation.