

CUTTING AND GRINDING MACHINES

EGA Master presents the unique range of fully ATEX certified Cutting and Grinding tools for all explosion risk environments. These tools offer spark free, non-electrical solutions which can be used in Zone 1 and 2 areas without the need for a hot-work permit, which usually means completely stopping production, with all the costs involved on doing so.

EGA Master Safety Tools offers Cutting and Grinding Equipment which will revolutionise pipework and structural steelwork installation and maintenance in hazardous areas.



ZONES
M2 MINING
1,2 GAS
21,22 DUST

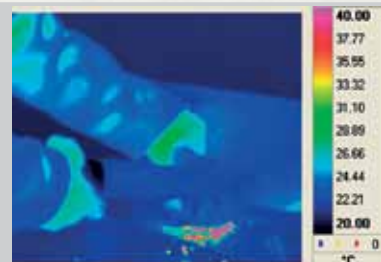
CE*G12

EC-Certificate of conformity:
II 2 Gc IIA T160°C
II 2 Dc T160°C
I M2c T160°C

**Does not
produce sparks
or dust!!**

These cutting and grinding machines do not produce sparks or dust. Due to the low temperature levels of the grinding operation, there is no need for a Hot Work Permit on offshore platforms.

The particles produced while working will **never** have enough energy or reach a high enough temperature to produce ignition (particles do not exceed 70°C in any case).



Noise level just above first action level for hearing protection. Between 76 and 83 dbA.

Designed for zones 1, 2, 21, 22 and M2; mining works, gas and oil extraction, refineries, ship maintenance, chemical industry, silos,...

Roughness profile from 40 – 75 microns after grinding, allowing recoating without any further surface preparation.

Low vibration levels (less than 2.5m/s²)

Designed for work on mild steel, stainless steel, coated steels, Fendolite, Chartek, iron, aluminium and painted or rusted steel.

STANDARD CUTTING MACHINE



EGAMASTER ATEX CUTTING MACHINE



SURFACE PREPARATION KIT

ZONES
M2 MINING
1,2 GAS
21,22 DUST



EC-Certificate of conformity:
II 2 Gc IIA T160°C
II 2 Dc T160°C
I M2c T160°C

COD

79674

CE*G12

COD

Composition

79651	Straight grinder
79652	Cylindrical adapter 25x25mm
79653	Cylindrical adapter 19x25mm
79654	Cylindrical radius end burr adapter 19x25mm
79655	Tree burr radius end ADAPTER 16x35mm
79656	Tree burr radius end ADAPTER 16x25mm
79657	Taper D/C burr radius end ADAPTER 12,7x25mm
79659	90° Grinding machine
79660	Cylindrical adapter with bearings 30mm
79661	Guard for grinding machine 79659
79663	Grinding machine for painting removal
79665	Guard for grinding machine 79663
79664	Paint removal disc
71448	Non-sparking Cu-Be adjustable wrench 6"
70117	Non-sparking Cu-Be adjustable wrench 8"
72739	Brass brush
79234	Non-sparking Cu-Be single ended open jaw spanner 10mm
79235	Non-sparking Cu-Be single ended open jaw spanner 14mm
79236	Non-sparking Cu-Be single ended open jaw spanner 15mm
70153	Non-sparking Cu-Be open-end wrench 17-22mm
71584	Non-sparking Cu-Be electrician screwdriver 6mm
70393	Non-sparking Cu-Be hexagonal key 4mm

TECHNICAL SPECIFICATION

	79651	79659	79663
Working pressure	6,3 bar max.		
Air flow	30l/s max	10l/s max	
Vibration level	2.7 m/s2	< 2.5 m/s2	
Sound level	74dBA	75dBA	89dBA
Weight	2 kg max	1,4 kg max	2,4 kg max
Grinder length	450 mm	315 mm	380 mm
Rotation speed	3000rpm	1800rpm	1000rpm
Connection size and type	3/8" crowfoot and mcdonald	1/4" crowfoot and mcdonald	
Hose (Øint.)	3/8" minimum	1/4" minimum	
Lubrication	Lubricant free		



Cod. 79651

Cod. 79652

Cod. 79653

Cod. 79654

Cod. 79655

Cod. 79656

Cod. 79657

Cod. 79659

Cod. 79660

Cod. 79661

Cod. 79663

Cod. 79665

Cod. 79664

Cod. 71448

Cod. 70117

Cod. 72739

Cod. 79234

Cod. 79235

Cod. 79236

Cod. 70153

Cod. 71584

Cod. 70393

STRAIGHT GRINDER

ZONES
M2 MINING
1,2 GAS
21,22 DUST



EC-Certificate of conformity:
II 2 Gc IIA T160°C
II 2 Dc T160°C
I M2c T160°C

CE*G12

COD

79676

COD

Composition

79651	Straight grinder
79652	Cylindrical adapter 25x25mm
79653	Cylindrical adapter 19x25mm
79654	Cylindrical radius end burr adapter 19x25mm
79655	Tree burr radius end ADAPTER 16x35mm
79656	Tree burr radius end ADAPTER 16x25mm
79657	Taper D/C burr radius end ADAPTER 12,7x25mm
71448	Non-sparking Cu-Be adjustable wrench 6"
70117	Non-sparking Cu-Be adjustable wrench 8"
72739	Brass brush
79235	Non-sparking Cu-Be single ended open jaw spanner 14mm

TECHNICAL SPECIFICATION

Working pressure	6,3 bar max.
Air flow	30l/s max
Vibration level	2.7 m/s ²
Sound level	74dBA
Weight	2 kg max
Grinder length	450 mm
Rotation speed	3000rpm
Connection size and type	3/8" crowfoot and mcdonald
Hose (Øint.)	3/8" minimum
Lubrication	Lubricant free



Cod. 79651



Cod. 79652



Cod. 79653



Cod. 79654



Cod. 79655



Cod. 79656



Cod. 79657



Cod. 71448



Cod. 70117



Cod. 72739



Cod. 79235

GRINDING MACHINE FOR PAINTING REMOVAL

ZONES
M2 MINING
1,2 GAS
21,22 DUST



EC-Certificate of conformity:

II 2 Gc IIA T160°C

II 2 Dc T160°C

I M2c T160°C

CE*G12

COD

79677

TECHNICAL SPECIFICATION

COD	Composition
79663	Grinding machine
79665	Guard for grinding machine
79664	Paint removal disc
71448	Non-sparking Cu-Be adjustable wrench 6"
70117	Non-sparking Cu-Be adjustable wrench 8"
72739	Brass brush
79236	Non-sparking Cu-Be single ended open jaw spanner 15mm
70153	Non-sparking Cu-Be open-end wrench 17-22mm
71584	Non-sparking Cu-Be electrician screwdriver 6mm

Working pressure	6,3 bar max.
Air flow	10l/s max
Vibration level	< 2.5 m/s ²
Sound level	89dBA
Weight	2,4 kg max
Grinder length	380 mm
Rotation speed	1000rpm
Connection size and type	1/4" crowfoot and mcdonald
Hose (Øint.)	1/4" minimum
Lubrication	Lubricant free



Cod. 79663



Cod. 79665



Cod. 79664



Cod. 71448



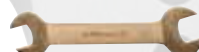
Cod. 70117



Cod. 72739



Cod. 79236



Cod. 70153



Cod. 71584

90° GRINDING MACHINE

ZONES
M2 MINING
1,2 GAS
21,22 DUST



EC-Certificate of conformity:
II 2 Gc IIA T160°C
II 2 Dc T160°C
I M2c T160°C

CE*G12

COD

79678

TECHNICAL SPECIFICATION

COD	Composition
79659	90° Grinding machine
79660	Cylindrical adapter with bearings 30mm
79661	Guard for grinding machine
71448	Non-sparking Cu-Be adjustable wrench 6"
70117	Non-sparking Cu-Be adjustable wrench 8"
72739	Brass brush
79234	Non-sparking Cu-Be single ended open jaw spanner 10mm
70393	Non-sparking Cu-Be hexagonal key 4mm

Working pressure	6,3 bar max.
Air flow	10l/s max
Vibration level	< 2.5 m/s ²
Sound level	75dBA
Weight	1,4 kg max
Grinder length	315 mm
Rotation speed	1800rpm
Connection size and type	1/4" crowfoot and mcdonald
Hose (Øint.)	1/4" minimum
Lubrication	Lubricant free



Cod. 79659



Cod. 79660



Cod. 79661



Cod. 71448



Cod. 70117



Cod. 72739



Cod. 79234



Cod. 70393

CUTTING MACHINE WITH WELD SEAM REMOVAL AND CUTTING DISC

ZONES
M2 MINING
1,2 GAS
21,22 DUST



EC-Certificate of conformity:
II 2 Gc IIA T160°C
II 2 Dc T160°C
I M2c T160°C

CE*G12

COD

79675

COD

Composition

79667	Cutting machine
79669	Guard for machine
79673	Brass coupling for 800 rpm machine
79671	Weld seam removal disc
79672	Wheel nut & Flange
79668	Cutting disc
79681	Wheel nut wrench for cutting disc
71448	Non-sparking Cu-Be adjustable wrench 6"
70117	Non-sparking Cu-Be adjustable wrench 8"
79236	Non-sparking Cu-Be single ended open jaw spanner 15mm
70395	Non-sparking Cu-Be hexagonal key 6mm
72925	Non-sparking Cu-Be open-end wrench 27-32mm

TECHNICAL SPECIFICATION

Working pressure	6,3 bar max.
Air flow	30l/s max
Vibration level	< 2.5 m/s ²
Sound level	74dBA
Weight	3,5 kg max
Grinder length	390 mm
Rotation speed	800rpm
Connection size and type	3/8" crowfoot and mcdonald
Hose (Øint.)	3/8" minimum
Lubrication	Lubricant free



Cod. 79667



Cod. 79669



Cod. 79671



Cod. 79672



Cod. 79668



Cod. 79681



Cod. 71448



Cod. 70117



Cod. 79236



Cod. 70395



Cod. 72925

ANTISTATIC HOSES



COD

79679	1/4"
79680	3/8"

ANTISTATIC CASE



CE*G12



COD

79682	79675
-------	-------



CE*G12



COD

79683	79674
	79676
	79677
	79678